



**F**  
**FORMTECH**®

concrete forms, inc.

**TRUSTED FORMWORK AND ACCESSORY SPECIALISTS**

**CONCRETE FORMING & SHORING EQUIPMENT**



Rental | Sales | Engineering

**Form Tech** carries a wide variety of formwork systems and products allowing our experienced teams to quickly handle both standard and complex forming situations. We combine our industry leading products, field experience and jobsite service to meet most formwork requirements. We do it with the right system and the right plan. We'll work to fully understand the scope of your project and provide the most efficient and effective formwork solution for your specific application.

## FORMING EQUIPMENT

### Column Forms



### Steel-Ply



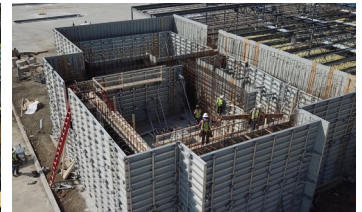
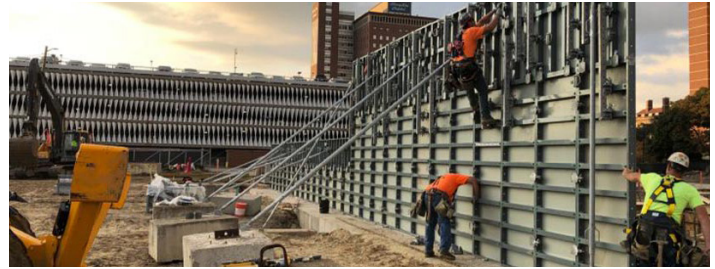
### SymPly



### Doka Frami Clamp System



### ALLFORM Forming Systems

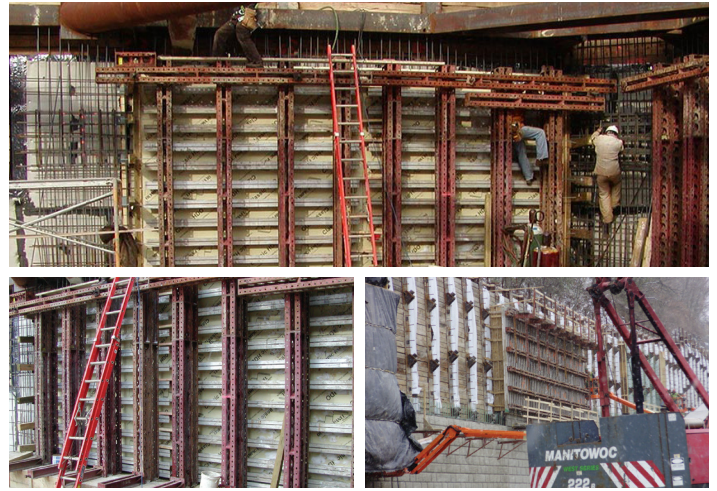


## FORMING EQUIPMENT CONTINUED

### MAX-A-FORM Forming System



### Soldier Beam Systems



**Form Tech** has a variety of versatile and easy to assemble shoring systems to address nearly any application while keeping safety at the forefront. Our engineering and field representatives work closely with customer field personnel to develop workable schemes that maintain safety, reduce labor. From traditional steel frames and posts to high strength aluminum legs, we'll support you with products and services that provide for increased worker productivity and confidence necessary for today's fast paced jobsites.

## SHORING EQUIPMENT

### 10K Frame Shoring



### Ischebeck-Titan HV Drop Head



**Form Tech** stocks many types of light and heavy formwork products and hardware from the most well-known manufacturers in the industry today. We focus on providing quality items that our customers recognize as being safe, reliable and economical. These quality products combined with our industry know-how allows us to provide for the regular, everyday needs of our customers while also being able to recommend solutions for many special applications.

## ACCESSORY PRODUCTS

### Wall Ties & Light Forming Hardware

---



### Heavy Tie Components

---



### Steel & Plastic Flatwork Forms

---



“When it comes to Form Tech’s service, no job is too big or too small as each project is handled with care from bid to the final concrete placement.”

## SERVICES

From start to finish, we'll strive to exceed your expectations on every aspect of your project. From pre-bid assistance to the final job close out, we'll provide meaningful, value added services with a sense of urgency, especially when field conditions change. Our unmatched jobsite, design, and operational support teams are there when you need them and will meet any service request you might have.

- Pre-Bid Assistance & Budgeting
- Formwork Design
- Jobsite Support
- Detailed Equipment Tracking Reports
- Equipment Renovation

## ABOUT FORM TECH

Established in 1976 and headquartered in Michigan, Form Tech has specialized in supplying concrete formwork to contractors for more than 40 years. Upon inception, Form Tech became the first independent formwork supplier in the USA.

We maintain and distribute the largest working fleet of Steel-Ply in the USA along with multiple clamp systems, shoring systems, flatwork forms, and all types of formwork accessories. Our current formwork inventory of over 2.5 million square feet coupled with our network of fully stocked branch locations has made Form Tech the preferred choice of concrete construction professionals.

We combine the industry's most complete product line with our highly experienced field consultants and formwork designers to deliver the most productive solutions for your project. We take all aspects of your project into account, ensuring that cycle times, ease of use, and adaptability are optimized.



[CONTACT US](#)

Give us a call at any of our branch locations, email us at [info@formtechinc.com](mailto:info@formtechinc.com), or click on [formtechinc.com/quote](http://formtechinc.com/quote) to get a quote. Our experienced Form Tech representatives will answer your questions, and help you get your project started with some of the best concrete forming, shoring, and accessory products in the industry, backed by a professional and detail-oriented staff.

---



### Charleston, SC

7377 Peppermill Lane  
North Charleston,  
SC 29418  
843.628.3434



### Detroit, MI

Corporate Headquarters  
975 Ladd Road  
Walled Lake,  
MI 48390  
Branch: 248.344.8260  
Corporate: 248.344.8265



### Charleston, WV

161 Industrial Road  
St. Albans,  
WV 25177  
304.722.6804



### Pittsburgh, PA

2850-A Kramer Road  
Gibsonia,  
PA 15044  
412.331.4500



### Charlotte, NC

1000 Thomasboro Road  
Charlotte,  
NC 28208  
704.395.9910



### Raleigh, NC

115 Peffinder Lane  
Raleigh,  
NC 27603  
919.833.0911



### Cleveland, OH

20801 Miles Road  
North Randall,  
OH 44128  
216.692.0497



---

TRUSTED FORMWORK & ACCESSORY SPECIALISTS

800-876-4857 | [info@formtechinc.com](mailto:info@formtechinc.com) | [formtechinc.com](http://formtechinc.com)